

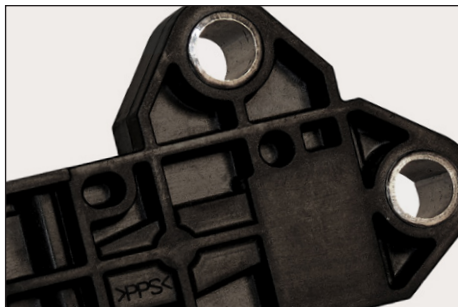
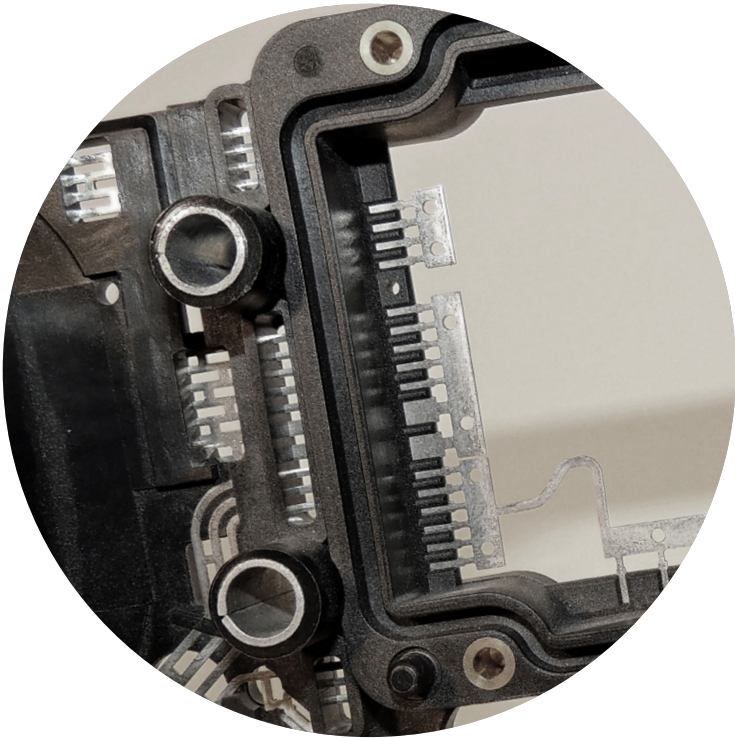


Split seam compression limiters

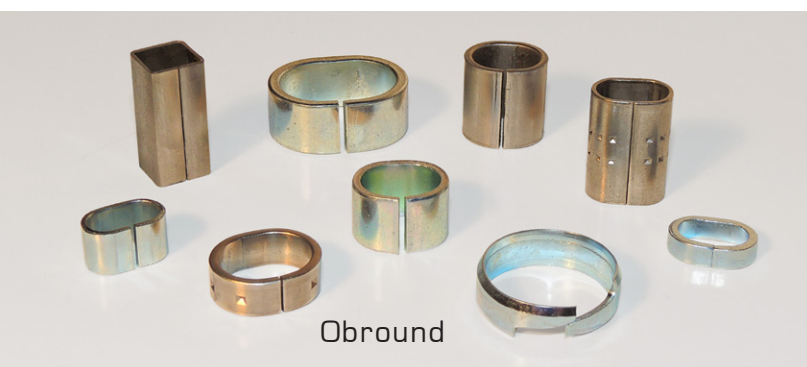
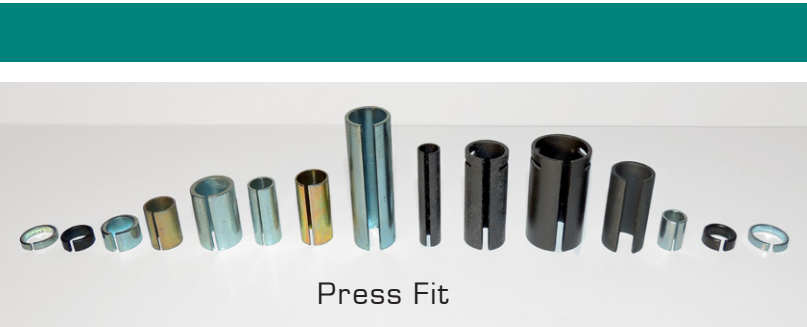
Cost effective solutions for the
most demanding applications

Compression Limiters are metal inserts designed to prevent distortion or cracking (i.e. limit the compression) of holes in plastic molded components. Commonly used as inserts for mounting holes, our compression limiters may be pressed in post-mold, or molded in place (insert molded). Available in standard and custom configurations to meet specific size and material requirements.

Optional features include obround, square, or oval shapes; coined grooves or dimples for insert molded retention, slots, heat treatment, and a variety of material and surface finish options.



COMPRESSION LIMITERS



Standard Materials

FASTENER GRADE	TYPICAL COMPRESSION LIMITER MATERIAL
• ISO 4.6 / ISO 5.8 / SAE Grade 2	SAE 1008 / 1010 Low Carbon
• ISO 8.8 / SAE Grade 5	SAE 1050 / SAE 1074 Annealed
• ISO 10.9 / SAE Grade 8	SAE 1074 / H.T. RC45 - 50
• ISO 12.9 / ASTM A574	SAE 1095 / H.T. RC58 - 62
• Stainless Steel	304 / 316 Annealed
• Brass	Alloy 260 1/4 Hard or 1/2 Hard
• Aluminum	3003 H14 / 5052 H32
Other Materials / Alloys available upon request	

NOMINAL CONFIGURATIONS

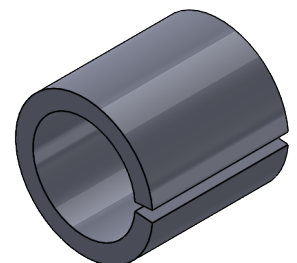
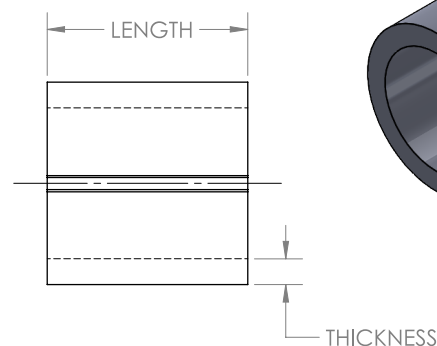
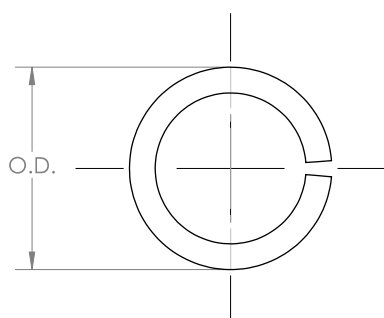
Inch			
Bolt Size	ID	OD	Length Tolerance
#8	.195	.265	+/- .005
#10	.225	.312	+/- .005
1/4	.285	.375	+/- .005
5/16	.350	.475	+/- .005
3/8	.415	.568	+/- .005

Metric			
Bolt Size	ID	OD	Length Tolerance
M4	4.7	6.70	+/- .12
M5	5.9	8.05	+/- .12
M6	6.8	9.15	+/- .12
M8	8.9	12.05	+/- .12
M10	10.8	14.75	+/- .12

Other sizes/reduced tolerances available upon request

CUSTOMIZED SOLUTIONS

Custom sizes and configurations available to meet your requirements.



AVAILABLE MATERIALS

- Steel (Low or High Carbon)
- HSLA – Alloy Steel
- Stainless Steel
- Aluminum
- Brass – Copper

TOLERANCES

- Standard Tolerances for Length, I.D. & O.D. +/- .005"
- Length, I.D. & O.D. Tolerances to +/- .002" Available

QUALITY FEATURES

- ISO 9001 Registered
- AIAG Compliant PPAP Available
- SPC Based Documentation & Traceability
- Material/Secondary Operation Certifications Available

SIZE RANGE

- I.D. 1/16" to 1-7/8" (1.5MM to 48MM)
- O.D. 5/64" to 2" (2MM to 51MM)
- Wall thickness .010" to .134" (0.25MM to 3.4MM)
- Maximum Length 8-5/8" (220MM)

ADDITIONAL FEATURES

- Butt Seam or Split Seam
- Coined Grooves or Dimples
- Chamfered or Broken Edge

SURFACE FINISHING OPTIONS

- RoHS Compliant Trivalent Zinc (Clear, Yellow, Black)
- Black Oxide/Black Phosphate
- Passivate/Electro Polish
- Customer Specific Finishes
- Heat Treat/Harden/Carburize/Anneal

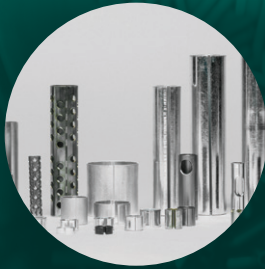
FLEXIBLE MANUFACTURING/DELIVERY

- Round, Square or Obround Shapes Available
- Wide Range of Inch & Metric Sizes
- In House Tool & Die Design and Construction
- Rush Deliveries/Scheduled Releases/Just In Time Delivery
- Custom Labeling/Packaging

DESIGNED FOR YOUR APPLICATION

Our engineered split seam design produced from rolled strip offers significant cost savings over cut tubes or machined inserts, while providing full functionality for your more critical applications. Available in fully closed butt seam configurations suitable for insert molding, or in a split seam press fit design, we can handle your most demanding applications.





TUBULAR

Raschig Rings
Compression Limiters
Spacers



STAMPING

Progressive
Compound
Shallow Draw



WIRE FORMING

2D & 3D Forms
Guards
Thread Rolling



MACHINING

Milling
Turning
Drill/Tap
Swiss Turning



FABRICATION

Welding
Laser Cutting
Assembly

INNOVATIVE SOLUTIONS FOR THE WORLD'S LEADING MANUFACTURERS.

There's a lot more to Wisconsin Stamping than our name would imply. You see, while our roots are in metal stamping, today it's about metal fabrication of virtually every kind, in every metal type and stock, and through numerous processes. We've perfected proprietary means of forming metal to simplify production and deliver higher quality products. Our name says Wisconsin Stamping, but there's a world of metal fabrication that goes on in our state-of-the-art facilities.



Some companies measure success by sales.

WE MEASURE IT TO 1/10,000 OF AN INCH.

ISO 9001 | RoHS Compliant



Wisconsin Stamping & Manufacturing, LLC
N110 W13455 North Patton Court, Germantown, Wisconsin 53022
888-236-8838 P: 262-236-9292 F: 262-236-9291
E: solutions@wisconsinstamping.com

www.wisconsinstamping.com

Copyright © 2015. Wisconsin Stamping & Manufacturing. All Rights Reserved | PUB 00020

