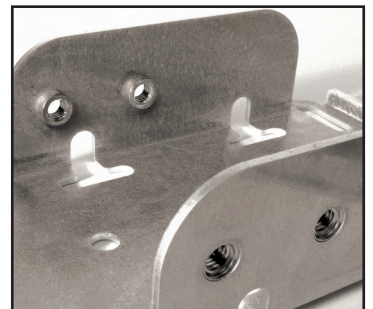
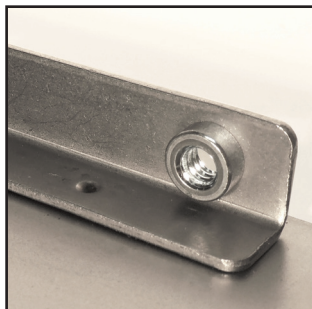
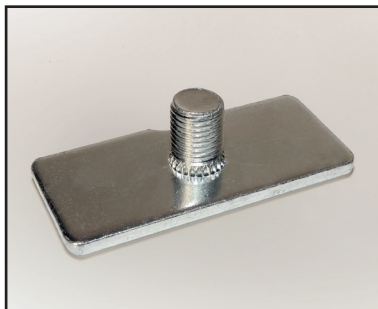
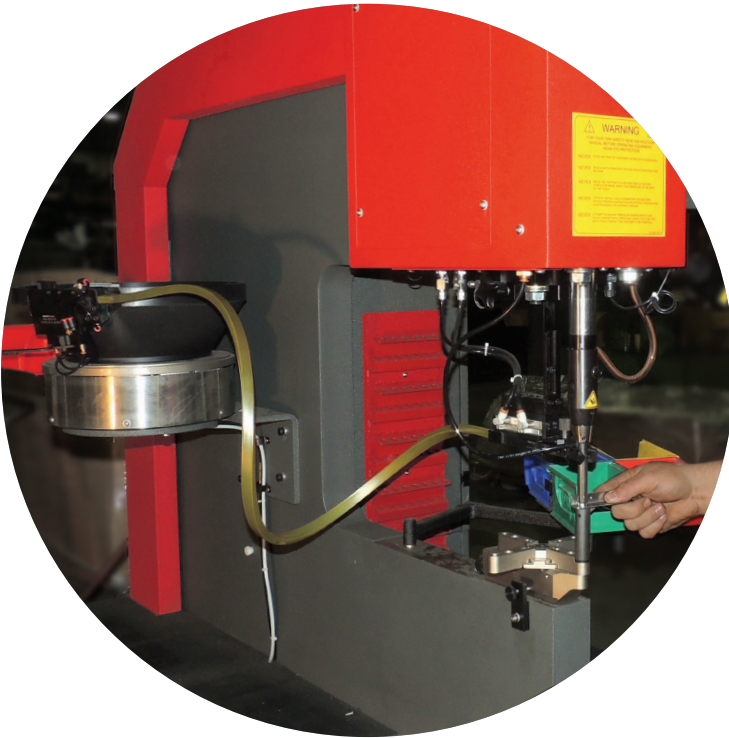




Self clinching fasteners

- Provides strong, reusable, permanent, and cost effective threads, studs, pins, stand-offs, and other mounting points in thin sheet metal.
- PEM®, Captive Fastener®, Spiralock®, and other high quality brands available.
- Bowl fed automatic insertion technology assures precise installation and repeatable results every time, resulting in higher productivity and reduced cost.
- Available configurations include: Standard, Stainless, Aluminum, Floating, Blind, Flush, High Torque, Nylon Insert, Studs, Stand-offs, Panel Screws, in both inch and metric sizes. Other standard and special configurations available.



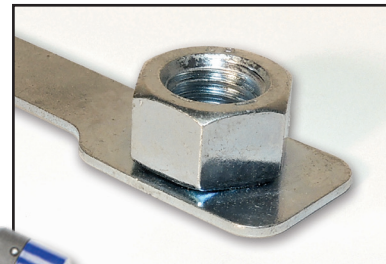


Rivet Nut

- Provides high strength, secure, reusable threads in thin sheet metal using compressive strength, results in no damage to surface coatings or the base material. Compressive bubble design is ideal for blind installations and produces in exceptional push out and pull out torque values.
- RIVNUT®, Sherex®, Nutsert®, Marson®, and other high quality brands available
- Available configurations include: Unified and Metric thread sizes, Standard, Stainless, Aluminum, Hex Body, Floating, Swaging, and Flat Head. Other standard and special configurations available.

Weld Nut

- Provides excellent rigidity, strength and stiffness, while allowing for a flush mounted surface in both thin and heavy gauge sheet metal. Useful where threads are required on a joint or in a corner, or where use as a bearing surface or structural support is necessary.
- Buckeye®, Gripco®, PEM®, and other high quality brands available.
- Available configurations include: Unified and Metric thread sizes, Standard, Stainless, Single Tab, Dual Tab, Round/Hex/Square Projection Nuts, Flanges, Right Angle, Self Locating, and other standard and special configurations available.



Wisconsin Stamping & Manufacturing, LLC
N110 W13455 North Patton Court, Germantown, Wisconsin 53022
888-236-8838 P: 262-236-9292 F: 262-236-9291
E: solutions@wisconsinstamping.com

wisconsinstamping.com

